



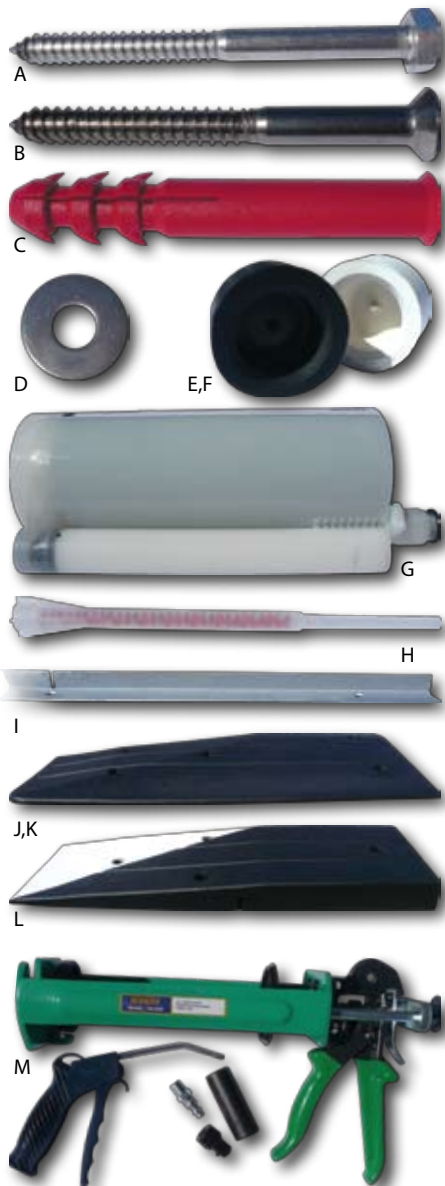
Trafficop

Installation Instructions

Safer Roads, LLC
 www.SaferRoads.net
 1.866.855.1256
 info@saferroads.net



Standard Parts List



Included:

- A. 52 Lag Bolts
- B. 6 Torx Lag Bolts
- C. 58 Nylon RediPlugs
- D. 52 Washers
- E. 48 Black Bungs (52 if all black)
- F. 4 White Bungs (arrow cushions only)
- G. 2 Two-Part Resin Sets
- H. 3 Resin Nozzles
- I. 2-56in. Steel Reinforcing Bars
- J. 2 Left Corner Ramps
- K. 2 Right Corner Ramps
- L. 8 Center Ramps (2 with arrows)

Required:

- M. Install Kit (Sold Separately)
 - 1 Resin Gun
 - 1 12in. Nozzle Air Gun
 - 1 T40 Torx Bit
 - 1 17mm. 1/2in. Drive Deep Socket

Don't Forget!

Required signage to warn drivers of upcoming traffic cushions (see attachment).

Recommended Equipment:

- 1 2.5 kva (minimum) generator
- 1 Rotary hammer drill (slow speed, high torque works best)
- 2 Masonry bit (14mm. or 9/16in. and 12-18in. in length)
- 2 50ft. 110-volt extension cord
- 1 100 psi portable compressor with 50ft. hose
- 1 Air (or 110v) impact wrench - 1/2in. drive
- 1 Hammer
- 1 Tape measure
- 1 Chalk-line and chalk
- 1 Stiff broom or blower
- 1 Roll electrical tape
- 1 Paper plate
- 2 Rag
- Work zone safety equipment



Before You Begin ...

Notes and Tips

- Ensure everyone's safety during installation by setting up proper maintenance of traffic.
- Have extra masonry bits on hand to minimize delays from dull bits. Typically, one bit is sufficient for two cushions before sharpening is necessary.
- Unpack all parts and start organization by type.
- During the layout process, have someone put together anchor assemblies ahead of time so they will be ready when you need them. (see below)



- Don't skimp on the drill! It is *the most* important tool for quick installations. We recommend a SDS bit or Spline Bit Rotary Hammer Drill. The bigger the better.
- For a two cushion installation: Install one cushion at a time and maintain an open traffic lane during the procedure. Once the first cushion is installed, it is ready for traffic. Simply switch to the other lane and install the second cushion.
- For a three cushion installation: Install the center cushion and a "lane cushion" at the same time. Once completed with these, then install the other "lane cushion".

1



Measure and mark the correct position on the road for the cushion. Snap a chalk line across both lanes so the cushions can be properly aligned with each other across the road. Center each cushion within the lane, keeping in mind that this original placement will determine all other steps of the installation process. **Typically, there should be no more than four feet between each cushion.**

2



Place the four module corners on the steel bars, being sure they are squared and properly positioned according to the markings. Be certain the corners are snug against each other. This will determine the final position for the steel bars.

Did You Know?

The Traficop is the only modular traffic calming device with a reinforcing bar.

3



Be careful to prevent any movement of the steel bars once they are positioned. With the corner modules still in place, drill through the holes in the bars to a 4-inch depth.

Tips

Have someone stand on the corner modules to prevent them from moving while drilling.

Mark the drill bit with electrical tape at four inches so you know how deep you are drilling.

4



Using your long-nose air gun, blow all debris out of the holes.

Tip

Use a paper plate, or even a piece of cardboard, placed on the nozzle of your air gun to keep debris from blowing back into your face.

5



Inject one pump of resin into each drilled and cleaned hole. The resin will dry **quickly**, which is the reason for extra nozzles.

Tip

As you move from hole to hole, hold a rag over the tip of the nozzle so as not to spill resin.

6



Gently tap the torx anchor assembly into the hole with a hammer to the point where the RediPlug is flush to the top of the hole.

7

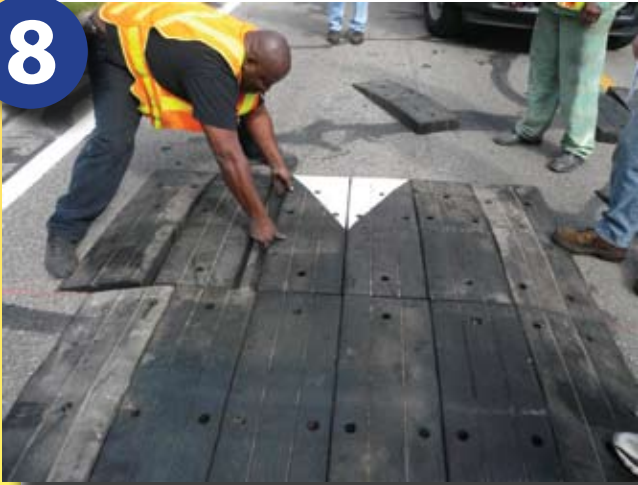


Using the impact wrench with the T40 torx bit, carefully drive the torx lag bolt so it is snug to the steel (see inset). **Do not overtighten**. Clean up any excess resin from around the bolt with a rag.

Tip

Steps 5, 6 and 7 can be done simultaneously. Work as a team with one person doing each task to get the job done more quickly.

8



Once the steel bars are secured to the road, fit the ramps on the steel. Be sure to position the arrows in the direction of vehicle approach. Tap the modules on the sides with a hammer to make them fit snugly and align properly.

9



Drill all the holes to a depth of seven inches from the *top* surface of the module.

Tip

Don't forget to mark seven inches with a piece of tape on your drill bit for easy measuring.

10



Blow the drilled holes clean with the long-nose air nozzle. Drilling and cleaning holes can be done at the same time.

11



Inject one pump of resin into each drilled and cleaned hole and insert lag bolt immediately. Tap the bolt into the hole so the RediPlug is at full depth and the anchor bolt is about 1 1/2 to 2 inches above the surface of the module. Tighten the bolt with the impact wrench until the washer is snugly seated. **Do not overtighten.**

Tip

All of these tasks can be done simultaneously. Work together in an assembly line fashion to get the job done quickly.

12



Once all of the anchors are in place and the resin has been given a few minutes to dry, complete the installation by inserting the color-coordinated bungs into the holes in the module. Gently tap in with a hammer. The Traficop is now ready for traffic!



1.866.855.1256 info@saferroads.net